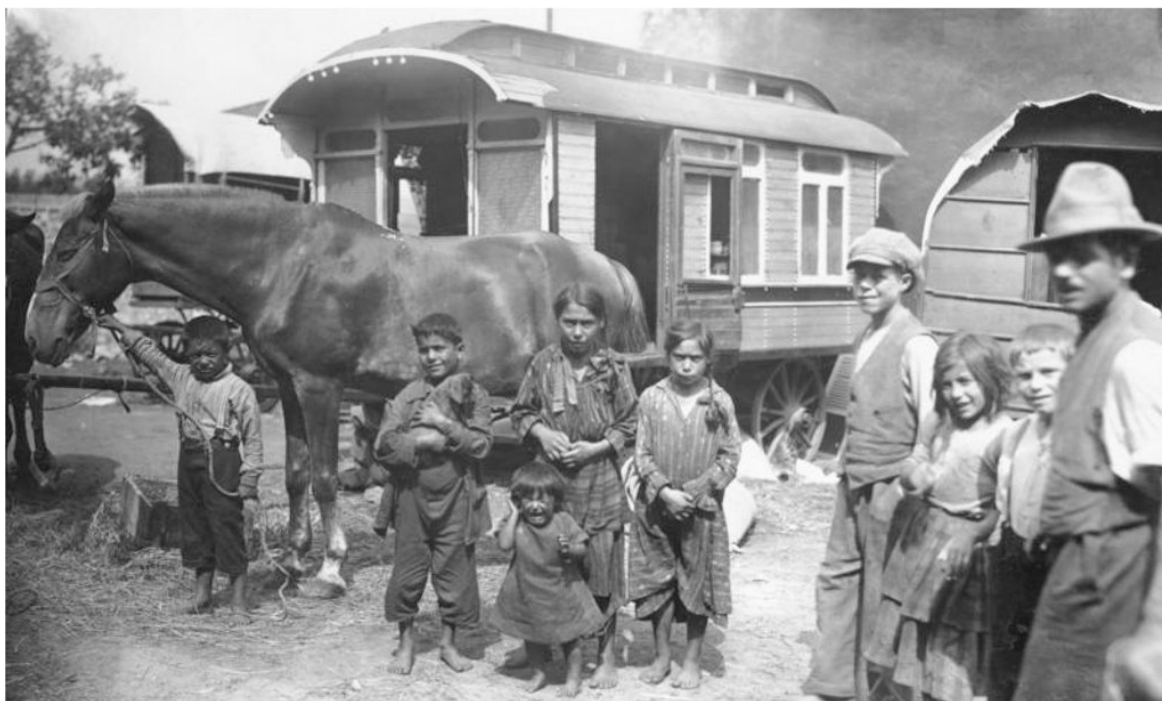


A3 Itinerant Craftsmen and Artisans

While most Central European Roma actually settled down hundreds of years ago, some Western European Sinti families continued to travel to various fairs and markets in their caravans. They dealt in cattle, horses or scrap metal or worked as smiths, grinders and tinkers. They usually followed traditional routes during the summer, returning to their home towns and villages for the winter.



1910

1951

1926

💡 Did you know

... that before 1950 there were many travellers who were not Roma or Sinti in most countries of Europe? They lived with their families in caravans, moving from place to place in search of work.

✎ Your task

Compare the photos on pages A.2 and A.3. What do the photos tell you about the lives of the two families? Can you think of three examples of people who often move from one place to another in the course of their work? What are the advantages and disadvantages of such a life?

📷 About the photo

An itinerant German Sinti family with their caravan. German Federal Archives, Koblenz, Germany.



<https://www.romasintigenocide.eu/en/a>